



## **RFT Project Setup Guide**

**Version 4.4**

This is a confidential document and is for restricted circulation only to the members of TestPro Pty Ltd.

All other circulations are only on request and subject to approval by TestPro.

## **DISCLAIMER**

The authors have taken care in the preparation of this book, but make no expressed or implied warranty of any kind and assume no responsibility for errors or omissions. No Liability is assumed for incidental or consequential damages in connection with or arising out of the use the information or instructions contained herein.

TestPro, the TestPro Logo, TestPro Automation Framework (TAF Pro), and the TAF Pro logo are registered patents in Australia. IBM, the IBM Logo, Rational Eclipse are trademarks or registered trademarks of International Business Machines Corp., registered in many jurisdictions worldwide. Microsoft and Internet Explorer are either registered trademarks or trademarks of Microsoft Corporation in Australia, other countries or both. Java and all Java-based trademarks and logos, MySQL and all MySQL trademarks and logos are trademarks of Sun Microsystems, Inc, in Australia, other countries or both. Other company, product, or services names may be trademarks or service marks of others.

All rights reserved. This document is protected by copyright and permission must be obtained from TestPro Pty Ltd prior to any reproduction or alteration of content in any form or means. The centrally located master version of this document is deemed the true and correct version of content.

Any alterations made without express permission of TestPro Pty Ltd is deemed unauthorised and unverified and will not in any way be the responsibility of TestPro Pty Ltd.

Licensed Software Patent Numbers: 8195982 and 2010202573 - Property of TestPro Pty Ltd. Software is subject to Patent Laws. Use of this software is subject to a valid and current licence agreement with TestPro Pty Ltd. This application integrates with Open Source and IBM Rational Suite Products whose use is subject to independent licence agreements with those companies.

# 1. Connect TAF Pro to a Rational Functional Tester Project

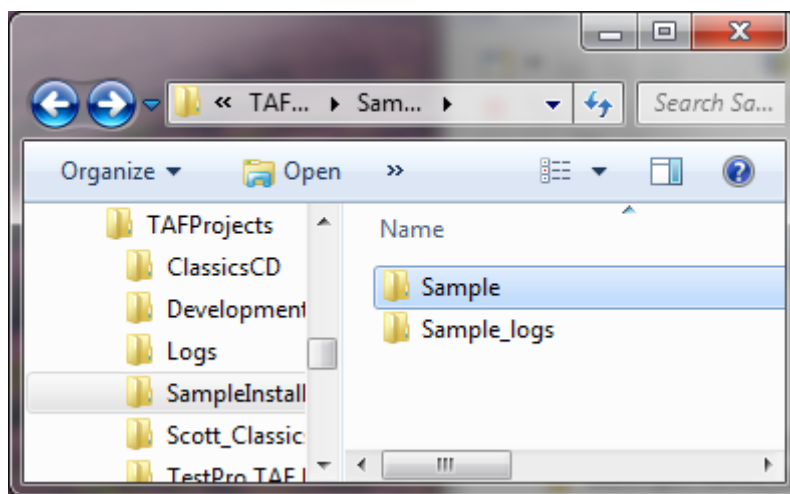
RFT projects should be copied to a separate directory before being connected to TAF Pro because TAF Pro modifies the contents and structure of the Project. For example, if the RFT project is stored as X:\RFTProjects\ClassicsCD you could copy it to X:\TAFProjects\ClassicsCD. Both the project directory and the project logs directory should be copied. Do not copy the RFT workspace across.

Users require the same access rights in the TAFProjects directory as in the RFTProjects directory.

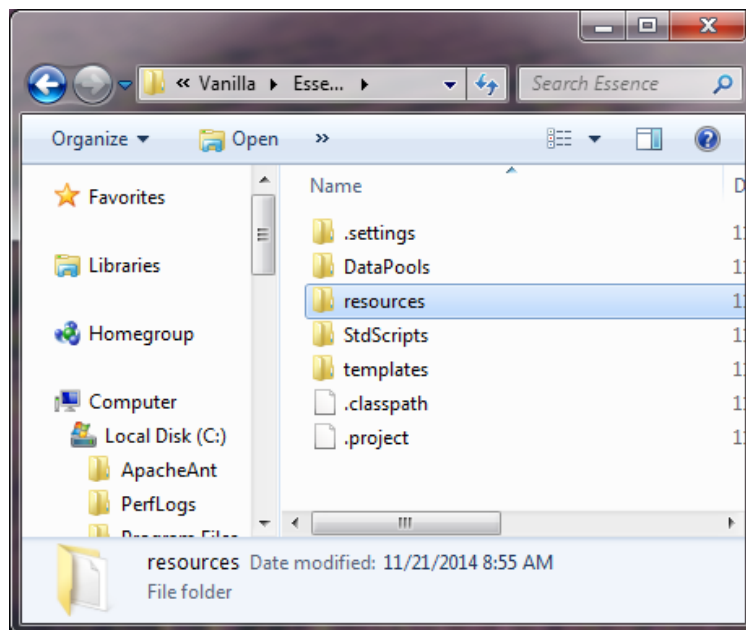
NB: The instructions in this section should be implemented for each RFT project that will be executed. Configure TAF Pro to existing RFT project RFT Repository

Copy the RFT project to the TAF Project directory.

Your TAF project directory should be similar to this:

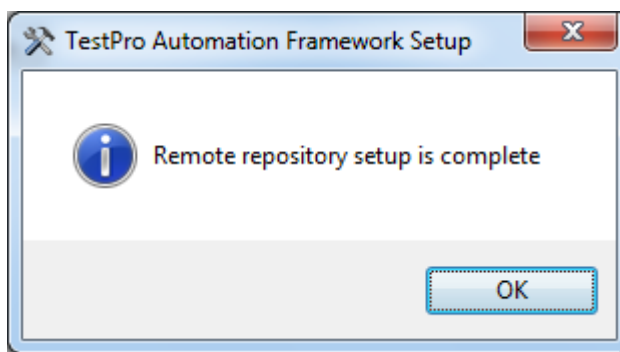


Within the TAF project the RFT project directory should be similar to this:

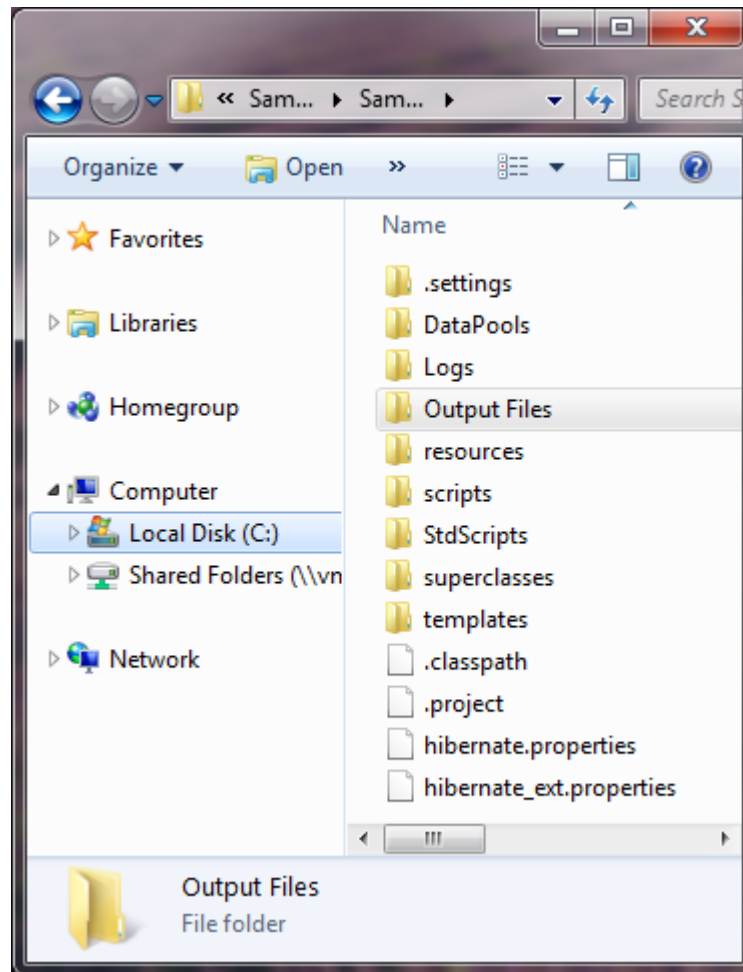


## 1.1. Configure the TAF Pro connection to the Remote repository

1. Start the RFT Project Setup Process, Start → All Program → TestPro Automation Framework → RFT Project Setup
2. Choose the Installer Language and Click **OK**
3. The TAF Pro start screen will display, followed by the Installation wizard Welcome screen
4. Follow the setup wizard clicking **Next**
5. A Browse For Folder Window appears for the Remote RFT Repository
6. Navigate to your Remote Project and select it's top level folder and click **OK**
7. The Remote repository setup is complete dialogue appears



8. Click **OK**
9. Click **Finish** at the Completing the TestPro Automation Framework Setup Wizard screen
10. Configuration of the Remote Repository is now complete.
11. The TAF Project directory should be unchanged
12. The RFT project directory in TAF should now contain additional data.



## 1.2. Upgrade the RFT project to include the TAF Pro setup

1. Start RFT
2. Click **File** → **Connect to a Functional Test Project**
3. Navigate to the copy of Functional Tester project in the TAF Projects folder
4. Click **Finish**, the RFT project will be loaded into the workspace.

### 1.2.1. Add TAF Pro jars to the build path

NB: If you are upgrading your installation you should ensure you follow the upgrade instructions supplied which differ from these instructions

1. In RFT right click on project name → Select **Properties** → Select **Libraries** tab
2. Click **Add Library** to create a user library for TAF Pro jars
3. Select **User Library**
4. Select **New**, enter the User Library name as **TAF Pro** and click OK
5. Add external jars from the TAF Pro installation directory lib folder to the TAF Pro user library, click OK.
6. Reset the Java Path by right clicking on the RFT project folder name, if necessary

7. Do a Clean and build from the Project menu in RFT
8. Check that no new problems have been added to your project.

### 1.2.2. Install the TAF Pro ScriptSuperClass

1. To change the Script Helper SuperClass right click [project name] → **Properties**
2. Select **Functional Test Project** from left pane of the new window
3. Click on the Script Helper Super class **Browse** button
4. Find “ScriptSuperClass” by entering the keyword in the Select default helper superclass for new scripts prompt.
5. Select “ScriptSuperClass” to highlight the Superclass option that appears
6. Click **OK** on the screen
7. Click **Apply** on the Properties for {project} Window.
8. Perform a Clean and Build from the Project menu.
9. Check that no new problems have been added to your project

### 1.2.3. Update Pre-existing Scripts

Pre-existing scripts need to have their superclass altered manually. If this is not done during this process, it will show up as error(s) when the script or project is converted for use with TAF Pro.

1. To change the Script Helper SuperClass right click [script] → **Properties**
2. Select **Functional Test Script** from left pane of the new window
3. Click on the Script Helper Super class **Browse** button
4. Find “ScriptSuperClass” by entering the keyword in the Select default helper superclass for new scripts prompt.
5. Select “ScriptSuperClass” to highlight the Superclass option that appears
6. Click **OK** on the screen
7. Click **Apply** on the Properties for {script} window.
8. Perform a Clean and Build from the Project menu.

### 1.2.4. Best Practice

Create a separate folder directly under the Project for TAF enabled scripts. Place converted scripts back into this folder as part of the conversion process.

1. Create a folder for scripts converted to work with TAF under the project name.